



LODI WINE

CALIFORNIA

Lodi Wine Masterclass with
Elaine Chukan Brown





• Sacramento

• Tahoe

• Napa



• San Francisco

• Oakland

• San Jose

• Los Angeles

• San Diego

CALIFORNIA'S WINEGROWING REGIONS



A NUMERICAL LISTING OF AVAs* GROUPED BY GEOGRAPHIC REGION

FAR NORTH

HUMBOLDT COUNTY
1. Willow Creek
(Also in Trinity Co.)

SHASTA COUNTY
2. Inwood Valley
3. Manton Valley
(Also in Tehama Co.)

SISKIYOU COUNTY
4. Seiad Valley

TRINITY COUNTY
5. Trinity Lakes

NORTH COAST

LAKE COUNTY
6. North Coast

MENDOCINO COUNTY
7. Benmore Valley
8. Big Valley District-Lake County
9. Clear Lake
10. Guenoc Valley
11. High Valley
12. Kelsey Bench-Lake County
13. Red Hills Lake County

MENDOCINO COUNTY
14. Anderson Valley
15. Cole Ranch
16. Covelo
17. Dos Rios
18. Eagle Peak Mendocino County
19. McDowell Valley
20. Mendocino

21. Mendocino Ridge
22. Pine Mountain-Cloverdale Peak
(Also in Sonoma Co.)
23. Potter Valley
24. Redwood Valley
25. Yorkville Highlands

NAPA COUNTY
26. Napa Valley
(Includes 27-42)
27. Atlas Peak
28. Calistoga
29. Chiles Valley District
30. Coombsville
31. Diamond Mountain District
32. Howell Mountain
33. Los Carneros
(Also in Sonoma Co.)
34. Mount Veeder
35. Oak Knoll District of Napa Valley

SOLANO COUNTY
43. Solano County Green Valley
44. Suisun Valley

SONOMA COUNTY
45. Alexander Valley
46. Bennett Valley
47. Chalk Hill
48. Dry Creek Valley
49. Fort Ross-Seaview
50. Fountaingrove District
51. Green Valley of Russian River Valley
52. Knights Valley
53. Moon Mountain District Sonoma County
54. Northern Sonoma
(Includes 45, 47-48, 51-52, 57 and part of 22 and 56)
55. Petaluma Gap
(Also in Marin County)
56. Rockpile
57. Russian River Valley
58. Sonoma Coast
59. Sonoma Mountain
60. Sonoma Valley

CENTRAL COAST

61. Central Coast

ALAMEDA COUNTY
62. Livermore Valley
(Also in Contra Costa Co.)
63. San Francisco Bay
(Includes all or portions of Contra Costa, San Benito, Santa Cruz, San Francisco and Solano counties)

CONTRA COSTA COUNTY

64. Lamorinda
MONTEREY COUNTY
65. Arroyo Seco
66. Carmel Valley
67. Chalone
(Also in San Benito Co.)
68. Hames Valley
69. Monterey
70. San Antonio Valley
71. San Bernabe
72. San Lucas
73. Santa Lucia Highlands

SAN BENITO COUNTY

74. Cienega Valley
75. Lime Kiln Valley
76. Mt. Harlan
77. Pacheco Pass
(Also in Santa Clara Co.)
78. Paicines
79. San Benito

SAN LUIS OBISPO

80. Adelaida District
81. Arroyo Grande Valley
82. Creston District
83. Edna Valley
84. El Pomar District
85. Paso Robles
(Includes 80, 82, 84, 86-93)
86. Paso Robles Estrella District
87. Paso Robles Genesee District
88. Paso Robles Highlands District
89. Paso Robles Willow Creek District
90. San Juan Creek
91. San Miguel District
92. Santa Margarita Ranch
93. Templeton Gap District
94. York Mountain

SANTA BARBARA COUNTY

95. Ballard Canyon
96. Happy Canyon of Santa Barbara
97. Los Olivos District
98. Santa Maria Valley
(Also in San Luis Obispo Co.)
99. Santa Ynez Valley
100. Sta. Rita Hills

SANTA CLARA COUNTY

101. San Ysidro District
102. Santa Clara Valley
(Also in Alameda, San Benito and San Mateo counties)

SANTA CRUZ COUNTY

103. Ben Lomond Mountain
104. Santa Cruz Mountains
(Also in San Mateo and Santa Clara counties. This AVA is not part of the San Francisco Bay AVA or Central Coast AVA)

INLAND VALLEYS

FRESNO COUNTY
105. Squaw Valley-Miramonte

MADERA COUNTY
106. Madera
(Also in Fresno Co.)

SACRAMENTO COUNTY
107. Alta Mesa
108. Borden Ranch
(Also in San Joaquin Co.)
109. Cosumnes River
110. Sloughhouse

SAN JOAQUIN COUNTY

111. Clements Hills
112. Jahant
(Also in Sacramento Co.)
113. Lodi
(Also in Sacramento Co. Includes 107-112 and 114)
114. Mokelumne River
115. River Junction
116. Tracy Hills
(Also in Stanislaus Co.)

STANISLAUS COUNTY

117. Diablo Grande
118. Salado Creek

YOLO COUNTY

119. Capay Valley
120. Clarksburg
(Also in Sacramento and Solano counties)
121. Dunningan Hills
122. Merritt Island

SIERRA FOOTHILLS

123. Sierra Foothills

AMADOR COUNTY

124. California Shenandoah Valley
(Also in El Dorado Co.)
125. Fiddletown

EL DORADO COUNTY

126. El Dorado
127. Fair Play

YUBA COUNTY

128. North Yuba

SOUTHERN CALIFORNIA

129. South Coast

LOS ANGELES COUNTY

130. Antelope Valley of the California High Desert
(Also in Kern Co.)
131. Leona Valley
132. Malibu Coast
(Also in Ventura Co.)
133. Malibu-Newton Canyon
134. Saddle Rock-Malibu
135. Sierra Pelona Valley

SAN BERNARDINO COUNTY

136. Cucamonga Valley
(Also in Riverside Co.)

RIVERSIDE COUNTY

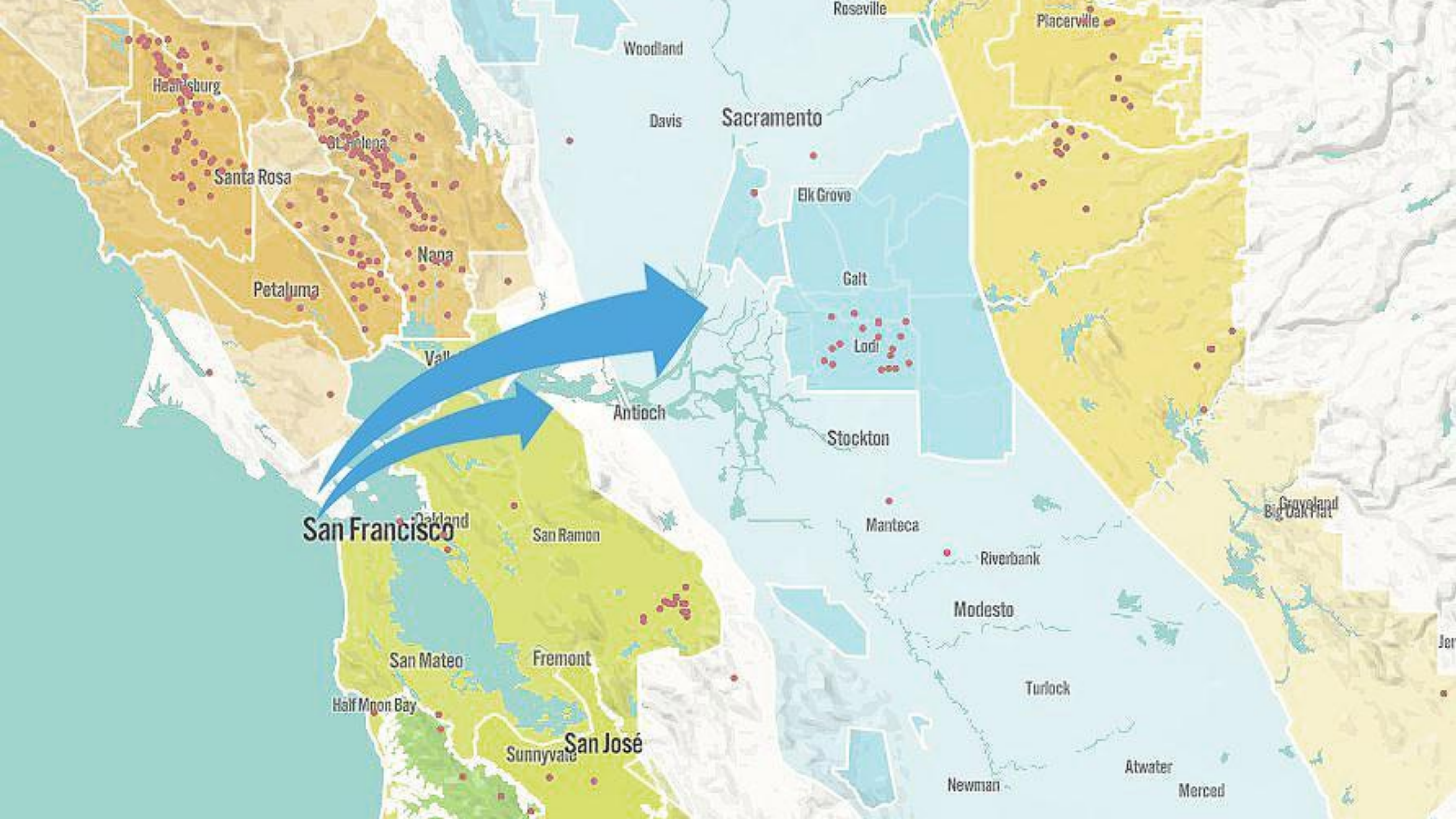
137. Temecula Valley

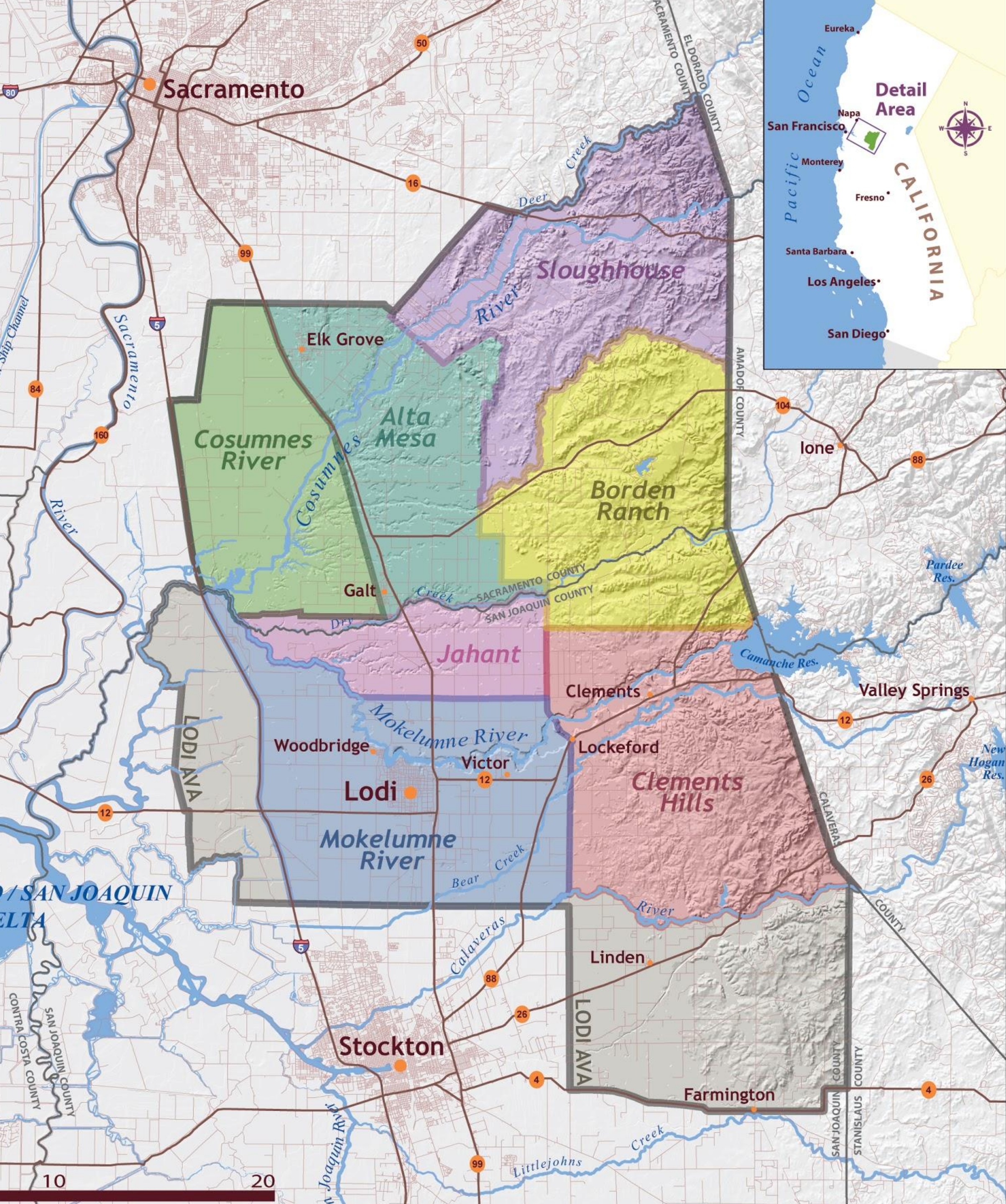
SAN DIEGO

138. Ramona Valley
139. San Pasqual Valley

ARIZONA

***WHAT'S AN AVA?**
The geographic origins of California winegrapes are identified either by political boundaries, such as county names, or by federally-recognized growing regions, called American Viticultural Areas (AVAs). For a wine to carry an AVA on its label, at least 85% of the grapes must be grown in that AVA; for county names that number is 75%. Wine with "California" or any California AVA on the label means that 100% of the grapes are grown in the Golden State.





LODI AMERICAN VITICULTURAL AREA

SEVEN APPELLATIONS OF LODI

In 1986, Lodi had been officially recognized by the Bureau of Alcohol, Tobacco, Firearms and Explosives (ATF) – known today as the U.S. Department of the Treasury’s Alcohol and Tobacco Tax and Trade Bureau (TTB) – as an American Viticultural Area (AVA).

In 2005, the Lodi American Viticultural Areas (LAVA) Steering Committee submitted a petition to the TTB to recognize seven sub-appellations based upon distinctions in soils, topographies, and subtle climate differences.

Fields Family Wines

2016 Old Vine Zinfandel, Stampede Vineyard

SRP: \$28

Vintage: 2016

Variety: Zinfandel – Vineyard planted in the 1920s

Appellation: Clements Hills – Stampede Vineyard

Alcohol: 14.6%

Current Winegrape Growers: The Perlegos Family

fieldsfamilywines.com
@fieldsfamwines





Clement Hills AVA



Mokelumne River AVA



St. Amant Winery
2018 Marian's Vineyard Zinfandel

SRP: \$35.00

Vintage: 2018

Variety: Zinfandel – Vineyard planted in 1901

Appellation: Mokelumne River – Marian's Vineyard

Alcohol: 14.9%

Current Winegrape Growers: Jerry & Bruce Fry

stamantwine.com

@st.amant_wine



Turley Wine 2018 Kirschenmann Zinfandel

SRP: \$39.00

Vintage: 2018

Variety: Zinfandel – Vineyard planted in 1915

Appellation: Mokelumne River – Kirschenmann
Vineyard

Alcohol: 15.1%

Current Winegrape Grower: Tegan Passalacqua

turleywinecellars.com
@turleywine



LangeTwins Winery & Vineyards 2014 Centennial Zinfandel

SRP: \$60.00

Vintage: 2014

Variety: Zinfandel – Vineyard planted in 1903

Appellation: Mokelumne River – Lewis Vineyard

Alcohol: 16.0%

Current Winegrape Grower: Charlie Lewis

langetwins.com
@langetwins





McCay Cellars 2016 Grenache

Vintage: 2016

Variety: Grenache – Vineyard planted in 2008

Appellation: Mokelumne River – Louis Abba Vineyard

Alcohol: 13.8%

Current Winegrape Growers: Louis & Phil Abba

mccaycellars.com
@mccaycellars





Precedent Wines
2017 Mule Plane Carignan

SRP: \$24.00

Vintage: 2017

Variety: Carignan – Vineyard planted in 1927 & 1930

Appellation: Mokelumne River – Mule Plane Vineyard

Alcohol: 12.5%

Current Winegrape Grower: John Shinn

precedentwine.com
[@precedentwine](https://www.instagram.com/precedentwine)





Thank you for participating!

Follow us:

@Lodi_Wine

@hawk_wakawaka

Next webinar Thursday October 15 at 10 am PDT

