



Common Fungal Diseases of Wine Grapes

Anthracnose



Lesions tend to congregate around main veins of leaves, unlike phomopsis.



Advanced lesions produce "shot hole" appearance of leaves similar to black rot.

Anthracnose



Lesions can be found on all green tissue, including stems and tendrils.



Lesions, referred to as "birds eye spot," on ripening Blanc Du Bois berries.



Birds eye spot on berries before veraison cause cracking and shrivel.



Black Rot



Lesions appear on leaves, stems, or any green tissue. Small black dots (pycnidia) are fruiting bodies that release spores.



Lesions at advanced stages produce "shot hole" appearance of leaves.



Lesions appear on leaves, stems, or any green tissue. Small black dots (pycnidia) form on all tissues.



Fruit infections start as circular, chocolate milk colored patterns, then whole berries turn brown and shrivel.



Downy Mildew



Severe lesions resulting in necrosis on upper leaf surface.



Severe lesions, spores on underside of leaf.



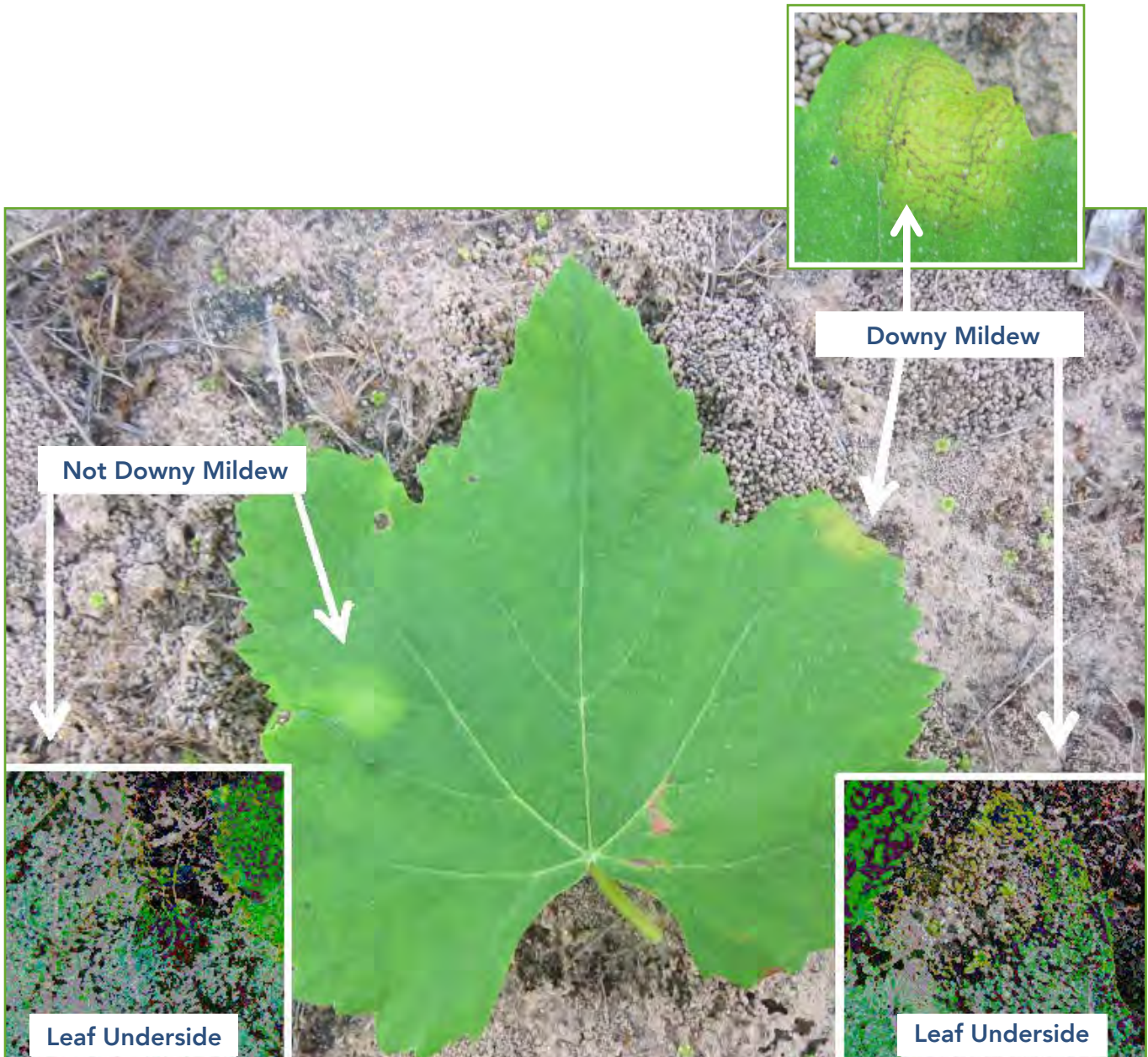
Infection of flower before bloom.



Infection on rachis and berries.



Downy Mildew



Lenoir and Blanc Du Bois may sometimes have yellow spots on leaf surface that are confused with downy mildew lesions. However, those spots do not have corresponding spores on leaf underside and do not develop spores or necrotic lesions. It is not understood why these yellow spots occasionally occur and they do not appear to be early symptoms of downy mildew lesions.



Phomopsis



Phomopsis lesions on leaves have a random pattern and distinct yellow "halo" around margin of lesions.



Phomopsis on unfolding leaves of new shoot. Early infections can lead to fruit rot.

Anthracnose vs. Phomopsis



Phomopsis lesions on leaves have a random pattern and distinct yellow "halo" around margin of lesions.



Anthracnose lesions are found primarily along main leaf veins and have dark gray to black borders.



Powdery Mildew



Infection of upper leaf surface.



Infection of green berries.

Was this helpful?

If you found this guide helpful please visit VirtualViticultureAcademy.com and view other exclusive Grower Guides.

Not a member? Whoops... a member must have shared this privileged document with you by mistake.

That's ok! No need to feel bad about that. You can become a member of Virtual Viticulture Academy and have full access to all of the grower guides you need to help manage your vineyard. Benefits include live webinars, hands-on field courses, virtual office hours to ask the expert viticulturist, vineyard product discounts and more.

Visit VirtualViticultureAcademy.com today to learn more.



Fritz Westover–Viticulturist • VirtualViticultureAcademy.com • info@virtualviticultureacademy.com

Copyright© Westover Vineyard Advising, LLC