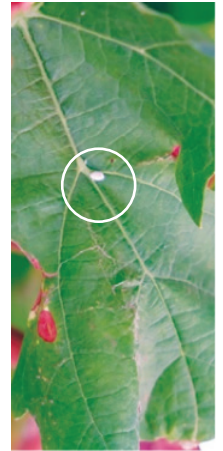


LODI VINE MEALYBUG SCOUTING CARD

<< best used in conjunction with hands-on training • train all workers >>

Vine mealybugs can be seen with the naked eye or a hand lens.

Look for females, crawlers, and white cottony egg sacs. Mark hotspots with mealybug flagging tape.



BENEFICIAL INSECT SCOUTING

Anagyrus wasps and *Cryptolaemus* beetles are on our team since they kill vine mealybugs.

***Anagyrus* wasp activity:** look for female vine mealybugs with a black dot on their body (the exit hole).

***Cryptolaemus* beetles:** look for fake shaggy "mealybugs" hanging out around vine mealybug colonies.



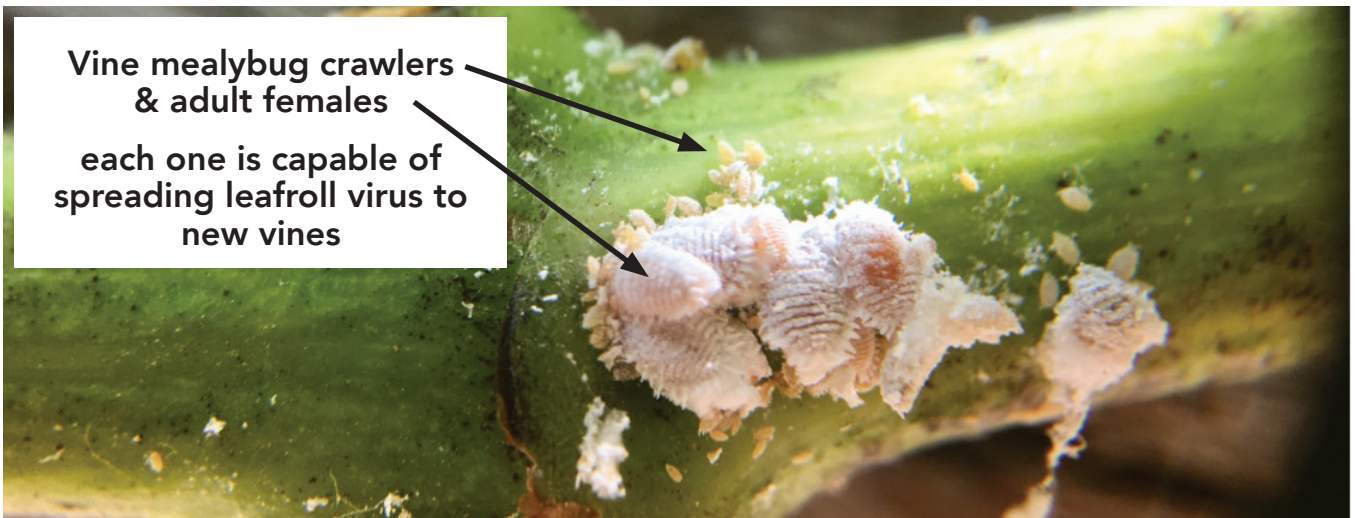
***Anagyrus* wasp activity:**
parasitized mealybugs



***Cryptolaemus* beetles:** a
wolf in sheep's clothing

LODI VINE MEALYBUG SCOUTING CARD

<< best used in conjunction with hands-on training • train all workers >>



Tips from local growers and pest control advisors on how to find vine mealybugs in your vineyard (and we think that as of 2019, mealybugs can be found in nearly every vineyard in Lodi):

- look for **ants**, who will be tending the mealybugs, or their **excavated dirt piles** at the base of trunks
- look for **black sooty mold** on the grape clusters, cordons, and leaves during the growing season and on the wood in the dormant season
- look for **white cottony clumps** under the bark, which are the egg sacs (use a hand lens to view the eggs)
- look for a **dripping waxy substance** in the canopy, on the bark, or on the underside of the cordons
- look for **wet trunks**
- look for **yellowing or partially-dead leaves** in the late summer – turn the leaves over and you may find a mealybug feeding near the veins
- look around **any connecting point** – the petiole to the cordon, the shoot to the arm, the graft union, the crotch, etc.



“If you can’t find them, maybe you’re not looking hard enough.”

Please join us for hands-on vine mealybug and grapevine virus outreach meetings.